

Mamba Pole Bracket Installation Manual

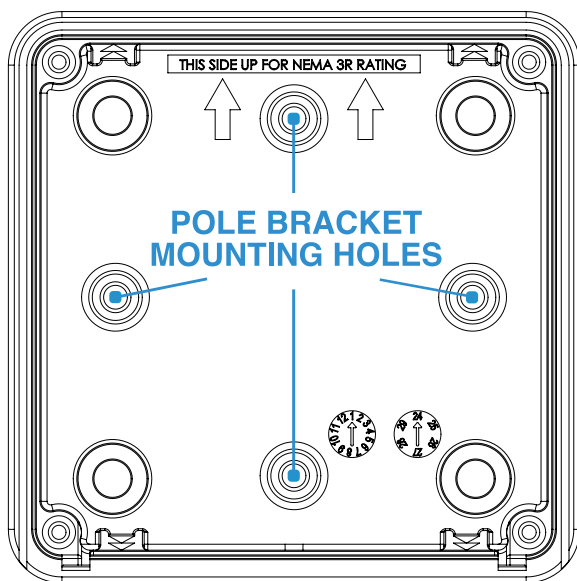
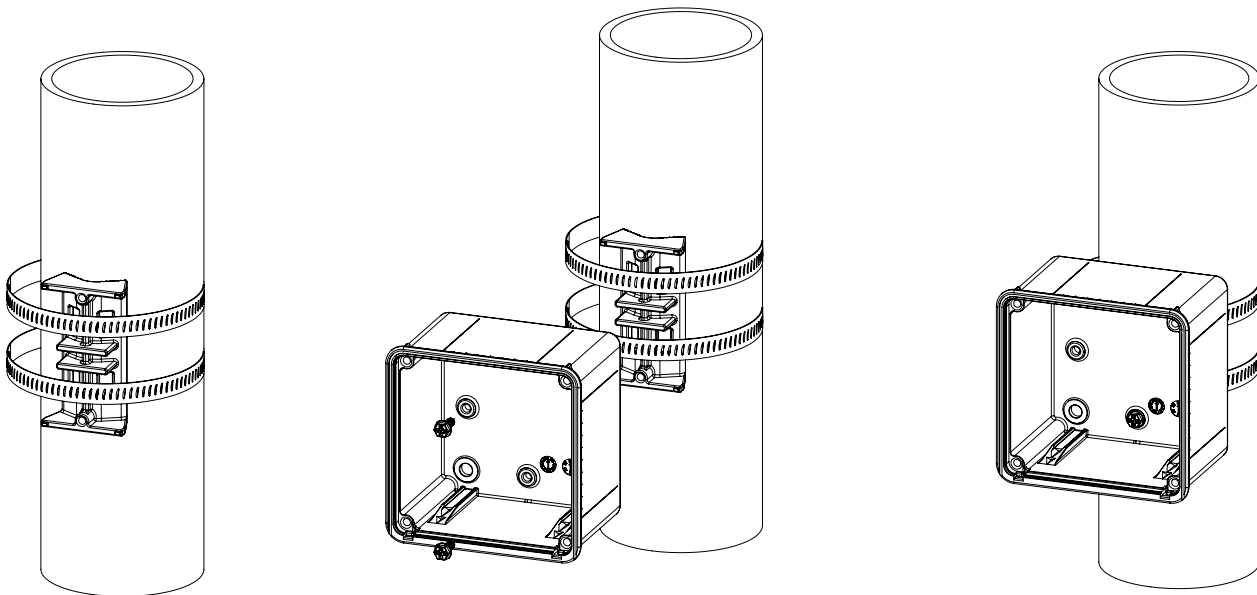
General Duty Solar Junction Box



making solar simple.

Quick Start Guide

1. Install Pole Bracket in desired location on pole/conduit/other using provided hose clamps. Pole Bracket may be installed on vertical or horizontal poles. Note hose clamp locations. Do not over-tighten.
2. Install Mamba with arrows up to the Pole Bracket. Align the Mamba on the Pole Bracket using the built-in alignment nubs. Install (2) provided screws through the back wall of the Mamba into the Pole Bracket. Tighten to 15-20in-lb
3. Complete installation of Mamba.



**WATCH
INSTALLATION
VIDEO**

